



# Commissioning for children and young people with speech, language and communication needs

## Bercow Ten Years On

Marie Gascoigne

6<sup>th</sup> June, 2017

*supporting change*



# My brief for today

- The 'journey' from my perspective working with commissioners across the UK over the past 10 years
- Opportunities and levers
- Challenges and threats
- Some thoughts for the Bercow Ten Years on review panel to consider





# Commissioning 2006 - 2017

Supporting children  
language and  
needs w  
ch

WID  
WORK

ROYAL COLLEGE OF  
SPEECH & LANGUAGE  
THERAPISTS

Speech,  
commu  
Tools fo  
better

**Better Comm**

Shaping speech, lang  
communication serv  
and young people

Hello  
High Street School



COMMISSIONING FOR SPEECH, LANGUAGE AND  
COMMUNICATION NEEDS (SLCN):  
USING THE EVIDENCE FROM THE BETTER  
COMMUNICATION RESEARCH PROGRAMME  
MARIE GASCOIGNE

[HTTP://WWW.BETTERCOMMUNICATION.ORG.UK/  
SUPPORT-FOR-COMMISSIONERS/](http://www.bettercommunication.org.uk/support-for-commissioners/)

PRODUCED BY  
Better Communication  
supporting change

SUPPORTED BY  
The Communication Trust  
Every child understood



# 2006

- Looking at the role of SLTs – whoever pays for them
- Introduces universal, targeted and specialist levels
- Joint commissioning and Children's Trust in the legislative context of the day



*supporting change*





# 2008

- Whole system outcome based integrated model
- Based on jointly agreed / commissioned outcomes
- SLT **ALWAYS** part of the wider workforce

## THE BALANCED SYSTEM<sup>®</sup>



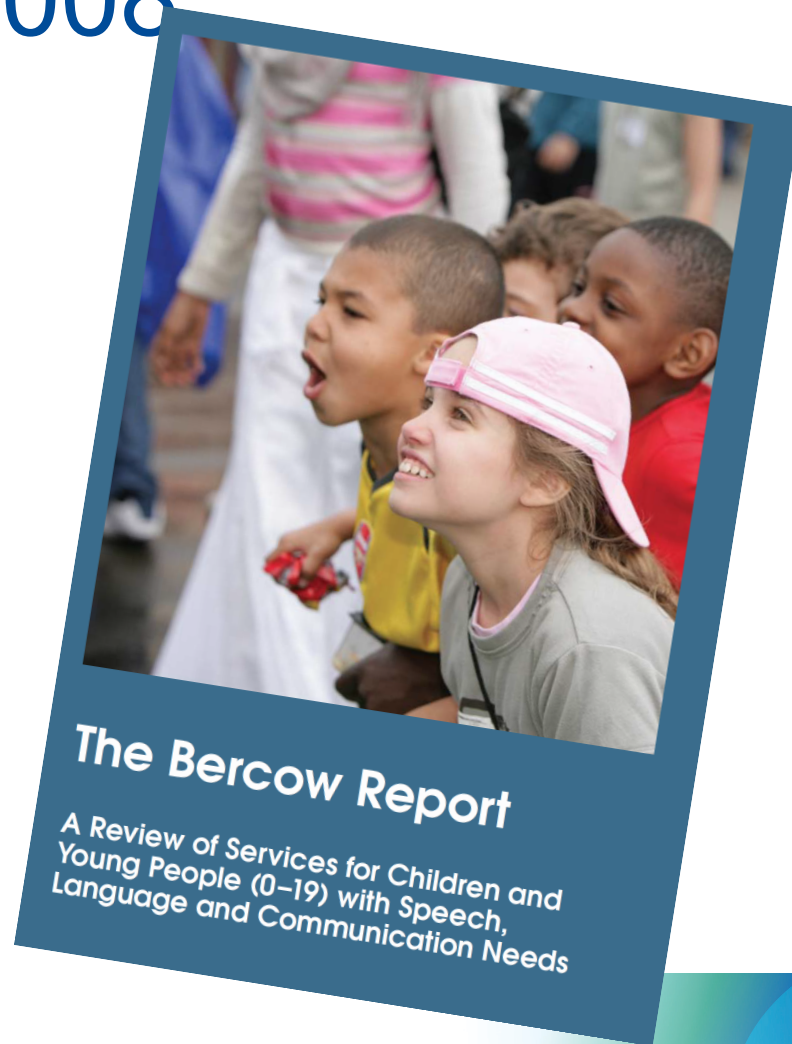
## FIVE STRANDS

CHILDREN AND YOUNG PEOPLE, THEIR PARENTS AND CARERS	• Are supported with appropriate <b>information</b> to make informed choices and <b>skills</b> to <b>support</b> development
ENVIRONMENTS	• Are audited, <b>adapted</b> and <b>enhanced</b> to maximise <b>participation</b>
WORKFORCE	• <b>Specialist knowledge</b> and skills are used to <b>build capacity</b> in the wider workforce to support across universal, targeted and specialist levels of provision
IDENTIFICATION	• Is efficient and <b>accessible</b> including training of others to identify and provision of pre-referral advice in community settings
INTERVENTION	• Is <b>appropriate and timely</b> , and may include direct or indirect, individual and group interventions delivered in a <b>functional</b> context



2008

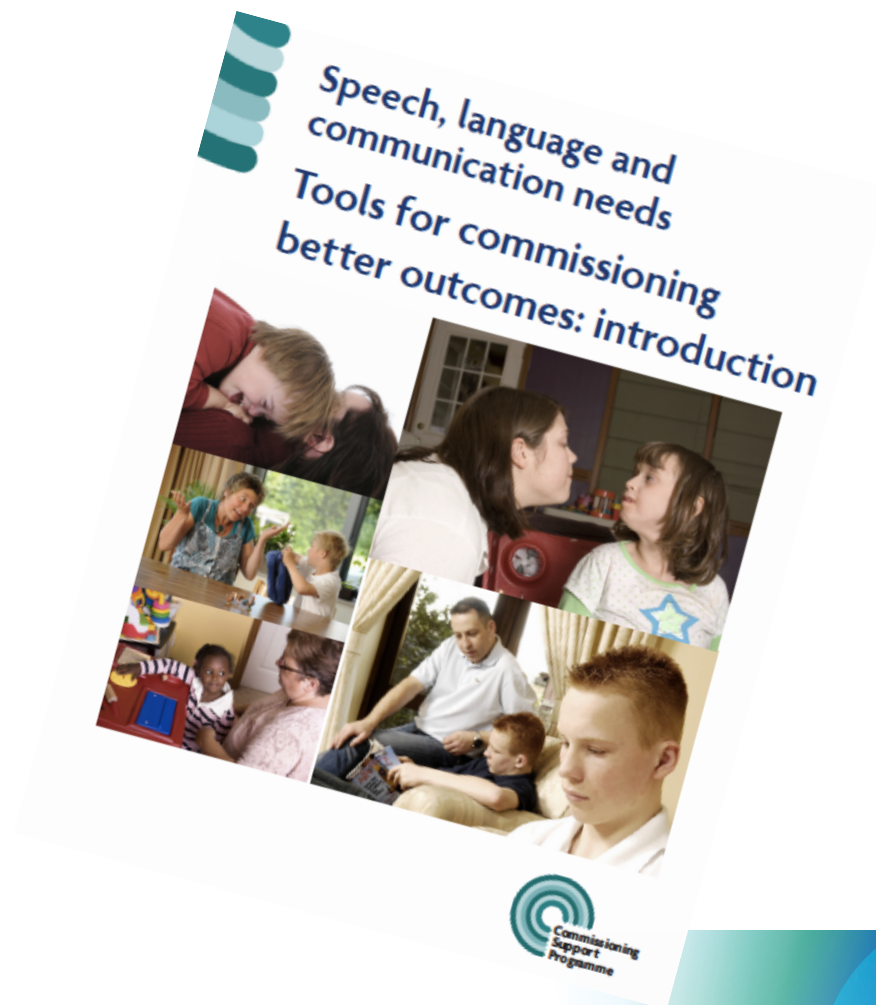
- Commissioning became a KEY issue
- Joint commissioning recommended
- Calls by ADCS for SLTs to be transferred into the employment of Las dismissed
  - Would move the issue not solve the problem





# 2009 - 2011

- Attempts to provide national guidance
- Bercow Commissioning Pathfinders
- Joint commissioning focus
- Curtailed post 2010 election





# 2011 - 2012

- Communication Champion Conferences and output
- Focus on commissioning BUT
- Joint Commissioning Units being disbanded or not formed



*supporting change*



# 2014

- Joint Commissioning back on the agenda with the SEND reforms
- Schools as commissioners of increasing importance



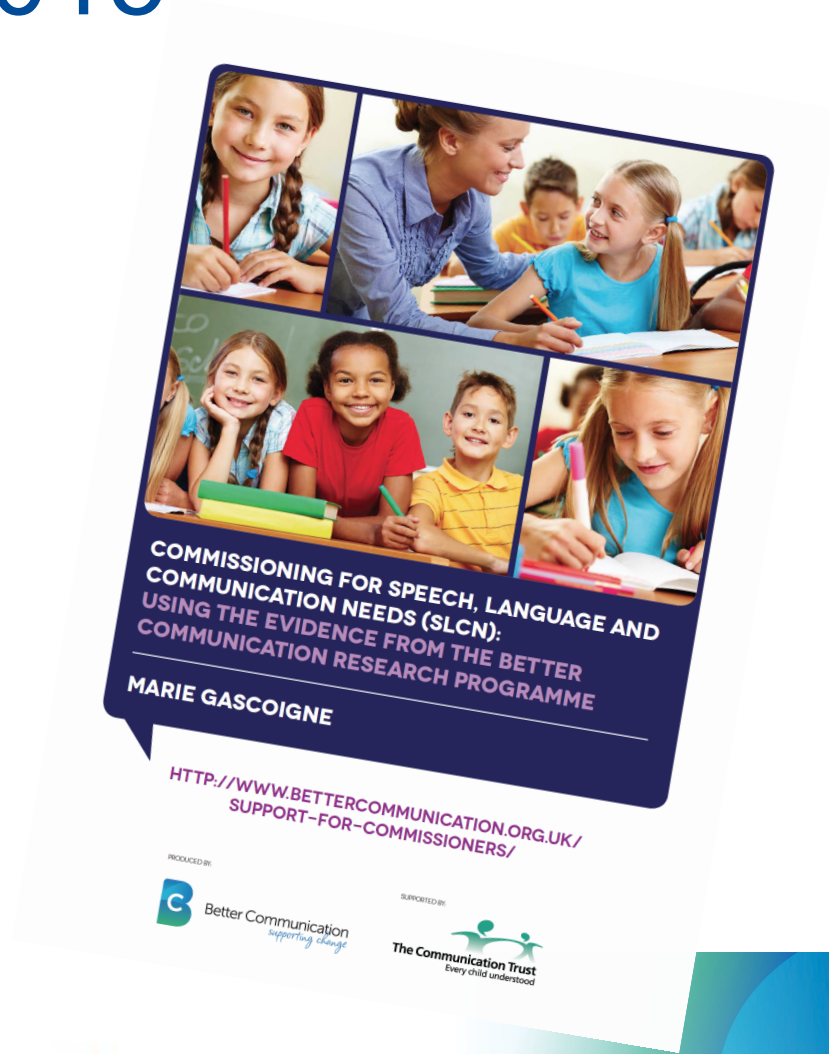
*supporting change*





# 2015

- Evidence from Better Communication Research Programme applied to commissioning
- Re-inforcement of whole systems approaches



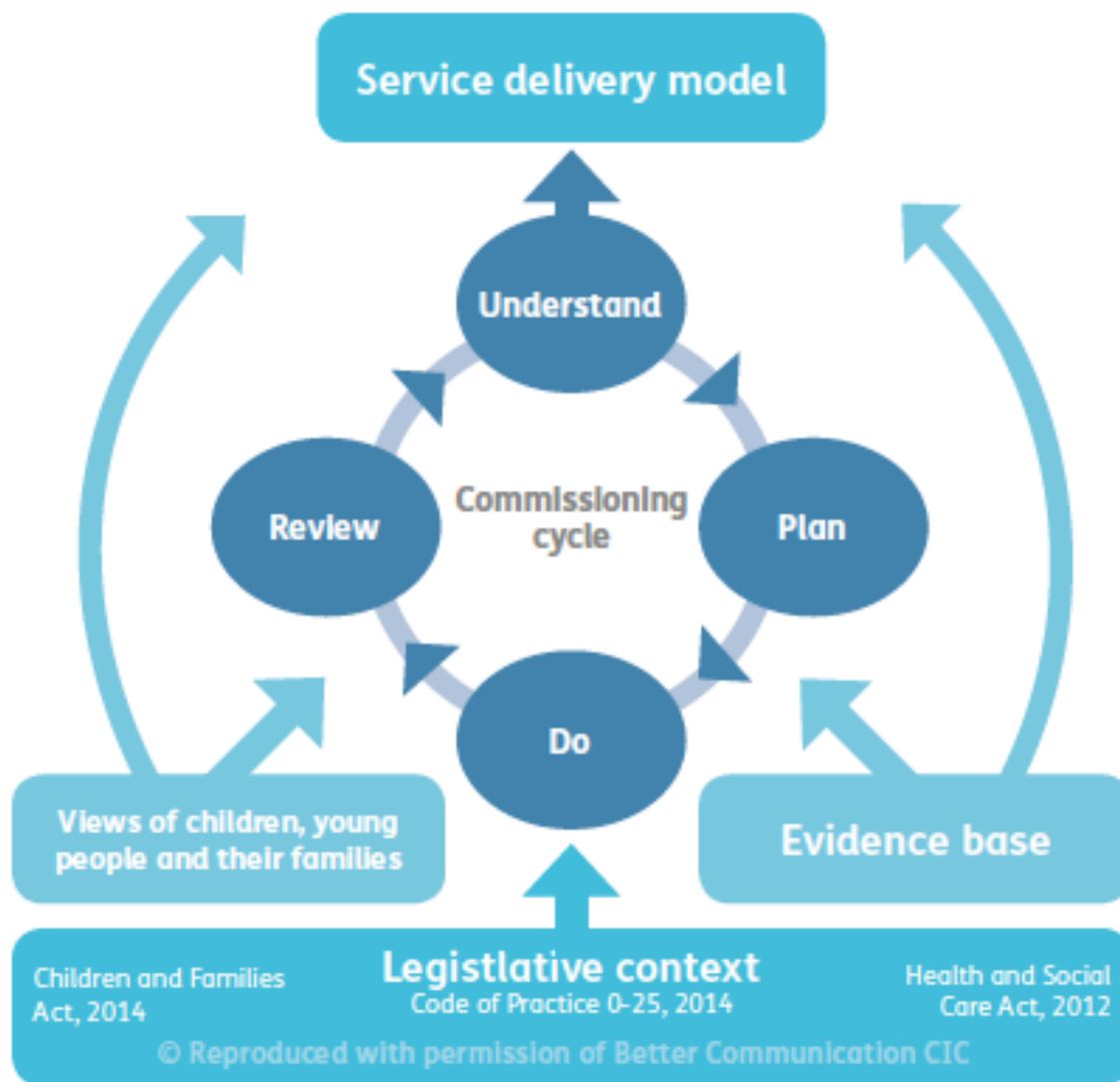


Figure 1: Key elements and how they inter-relate

*supporting change*



**“So what?”**





# Opportunities and Levers

- Focus on population based analysis of need accepting that speech, language and communication SKILLS development is on a continuum for all children and young people with those who struggle and have SLCN
- This approach requires an understanding and acceptance that the solutions have to be shared solutions – no one has all the answers

*supporting change*





# Opportunities and Levers

- Joint Commissioning Units
  - Make it easier (mostly!!)
- Schools coming together locally in clusters or as a whole Schools' Forum to agree additional commissioning (regardless of preferred provider)
- Informed parents and families and young people

*supporting change*



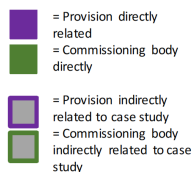
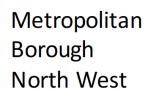




# Challenges and Threats

- Lack of true coherence amongst commissioners within a local area
- Lack of understanding amongst provider services of the true role and power of commissioning
- Lack of expertise in the system leading to unintended consequences
- Poor information for families and young people

*supporting change*



© Better Communication CIC, 2016





# Thoughts going forward

- Emphasis on speech, language and communication and speech, language and communication needs as distinct though part of a whole
- Joint Commissioning is challenging but still offers the best chance of robust systems change in a given area





# Thoughts going forward

- Highlight drivers
  - Joint inspection framework and LA level
  - Ofsted at school level
  - RCSLT guidance and standards for services
  - Locally specifications need to be whole system based and hold the different elements of the system to account through appropriate measures

*supporting change*



# Thoughts going forward

- Address challenges
  - Austerity measures have increased pressures on the system
  - Tendency to 'go back into box'; 'line of least resistance'
- Bercow Ten Years On has the opportunity to set a high bar – its clearly not an easy one to solve!

*supporting change*





- [Marie@bettercommunication.org.uk](mailto:Marie@bettercommunication.org.uk)
- Better Communication CIC is a not for profit organisation founded to support change for children and young people with SCLN

